



REIDS  
PROPERTY  
01600 77 8600  
www.reids.co.uk  
FOR SALE



# Felstead Road, Orpington BR6

Guide Price £825,000

🛏️ 3 🚿 1 🛋️ 2





Guide Price: £825,000 - £850,000. This stunning three double bedroom Dutch Barn style family home occupies one of the largest plots on the road enjoying a 165 ft south west facing rear garden.

The current owner has extended the property to create a contemporary living/dining/kitchen arrangement to the rear of the property; an amazing space, suitable for families and those looking to entertain. French doors lead out to the mature SW facing rear garden, enjoying afternoon and evening sun and measuring an impressive 165 ft. A large bright and airy front reception boasts an oversize bay window, typical for the 1930s period. A guest WC completes the ground floor.

Upstairs, there are three spacious bedrooms and family bathroom with shower.

Externally the property maintains a front garden whilst a new driveway has been fitted and will house at least two cars. To the rear there is a patio area, single garage and shed.

Orpington High Street, cinema, leisure centre with swimming pool, shops and restaurants are all approximately 0.5 mile away.

#### Schools

St Olave's Boys Grammar School: 0.4 Mile. Currently rated Outstanding by Ofsted.

Newstead Woods Girls Grammar School: 1.6 Mile. Currently rated Outstanding by Ofsted.

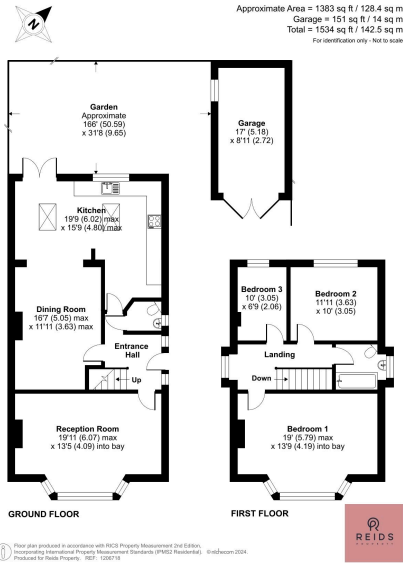
#### Transport

Orpington Train Station: 0.9 Mile. Fast services into London Bridge from 21 minutes.



**Felstead Road, Orpington, BR6**

Approximate Area = 1383 sq ft / 128.4 sq m  
 Garage = 151 sq ft / 14 sq m  
 Total = 1534 sq ft / 142.5 sq m  
 For identification only - Not to scale



- Popular Dutch Barn Style
- 1930s Detached House
- Refurbished And Extended
- 165 FT SW Facing Rear Garden
- Three Double Bedrooms
- 0.5 Mile From High Street
- Outstanding Schools Nearby
- Orpington Train Station 0.9 Mile

